



WHITLEY BAY HIGH SCHOOL

Home School Agreement

Information For Parents/Carers and Students

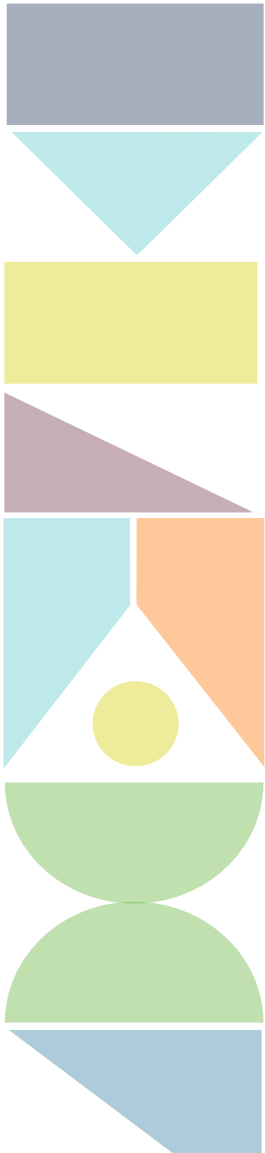
2025/26



ntl North Tyneside
Learning Trust

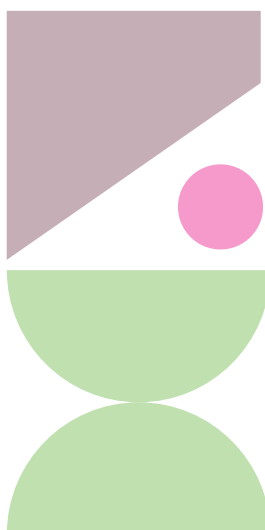


General expectations:

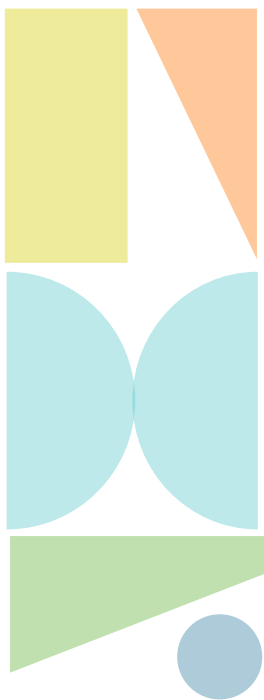


- This is a high school and there is an expectation that you will gain maturity in your relationships with others and learn from your mistakes;
- Treat everyone in your school community with respect;
- Value and support each other to be all different and all equal;
- Be kind and courteous to fellow students and staff;
- Stay safe and tell us if you ever have worries or concerns;
- Look after your health, including your emotional health and take care of others;
- Keep busy! Sign up for as many extra-curricular clubs or additional subject sessions as you can;
- Talk to us if you have a problem, are worried about something or someone or need help;
- Follow the uniform policy ensuring you are in the correct uniform each day which includes having your ID card with you at all times. You will need to be in full uniform and have your ID card with you to leave school site at lunch time. Please refer to our uniform expectations for clarity;
- Engage fully in lessons and work with your teachers to achieve your personal best results;
- Actively contribute to an inclusive and safe environment;
- Attend school unless you are unwell and be punctual to school and lessons. The school gate will be closed from 8.55 am and you will need to sign in at the main office if you arrive after this time (marked as late);
- Try to book routine medical appointments outside of the school day where possible;
- Regularly let your tutor know your intentions for lunch time and inform them of any changes to your intentions;
- Allow us to report your future destination to the Local Authority when you leave school as part of the Youth Support Services Agreement.

Class expectations:

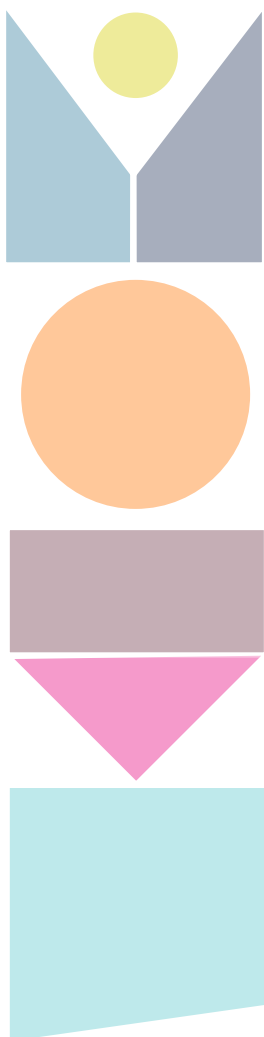


- Treat staff, both teachers and support staff, with respect;
- Respect the rights of others and other students' right to work;
- Attend and arrive on time with everything you need for the lesson including basic equipment such as a pen;
- Wear the correct school uniform;
- Go in quietly, sit in your allocated seat, take off your coat and get ready to work. This includes placing mobile phones or other electronic devices into bags except when the teacher asks you otherwise;
- Never use phones to take photos or videos of staff or students;
- Listen to the teacher and follow instructions;
- Use Microsoft Office apps or a diary to keep up to date with homework and organise learning;



- When using your device, follow the 'off and away unless we say' and the Acceptable Use Agreement (found in E Safety Policy online);
- Be responsible for transmitting information between school and home;
- Be aware of, and strive to meet the needs of others, where appropriate;
- Take care of equipment and the classroom;
- Treat staff, both teachers and support staff, with respect;
- Respect the rights of others and other students' right to work;
- Attend and arrive on time with everything you need for the lesson including basic equipment such as a pen;
- Wear the correct school uniform;
- Go in quietly, sit in your allocated seat, take off your coat and get ready to work. This includes placing mobile phones or other electronic devices into bags except when the teacher asks you otherwise;
- Never use phones to take photos or videos of staff or students;
- Listen to the teacher and follow instructions;

Out of class expectations:



- Queue patiently in the dining hall and other food stations - do not push in;
- Put litter and chewing gum in the bins;
- Eat and drink hot food/drinks in "A" Block hall or in the outside courtyard area, unless given permission to eat in a designated area;
- Only eat and drink (except water) in designated areas;
- Remain on the ground floor only during break and lunch time;
- Co-operate with all school staff including support and kitchen staff;
- Respect the fabric of buildings;
- Look after the toilets to ensure they are always fit to use;
- Do not congregate in school toilets for social purposes. There should only be one student in a toilet cubicle at any one time;
- Do not smoke or vape anywhere on site or near the site (including toilets);
- When the bell rings go straight to your lesson. Do not go to the toilet or wander on the corridors;
- Only visit the medical room if necessary because you are unwell. If you do need to use the medical room, then please cooperate with staff which includes handing in your mobile phone (unless a member of staff asks you to call home);
- Do not visit the school office for a cup during lesson time. If you regularly need a drink during the school day, please bring in your own water bottle;
- If you arrive to school any time after registration/tutorial, please sign in at the main office;
- Respect other people's property, such as bicycles;
- Behave responsibly at all times when out in the community including putting your litter in a bin and being respectful in all interactions within the local community.



Whitley Bay High School
Deneholm
Whitley Bay
NE25 9AS

0191 7317070
www.whitleybayhighschool.org